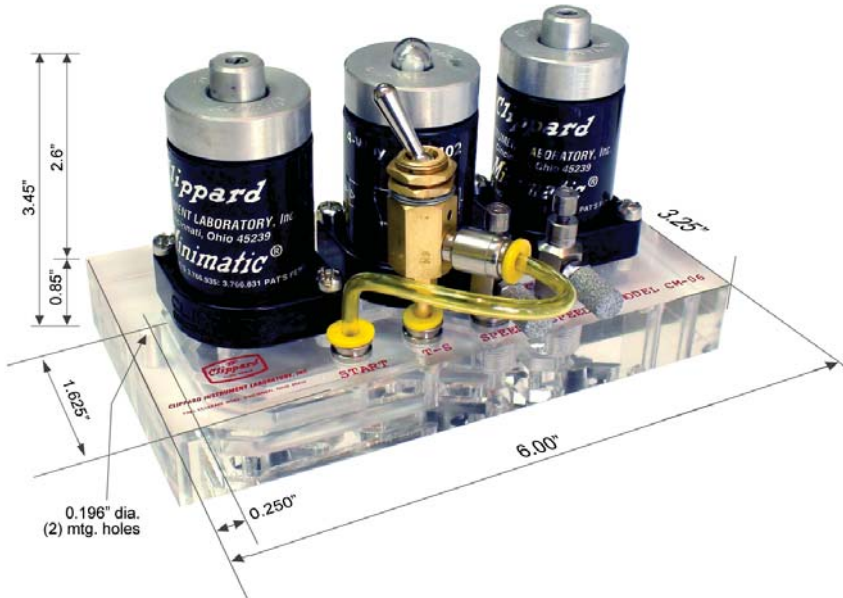


Auto-Cycling of a Double-Acting Cylinder



Size: 6.00" x 3.25" x 3.45"

Temperature: 32 to 140°F

Pressure Range: 40 to 150 psig

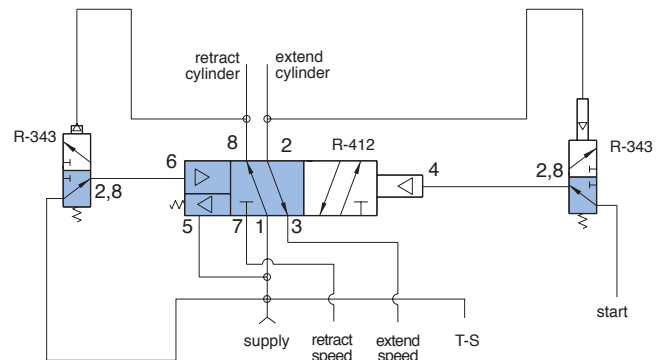
Use: The VA-06 module is designed to use an "on-off" toggle valve (or alternative input) for the cycling of a double-acting cylinder without the use of limit valves.

Operation: This circuit enables a double-acting cylinder to reciprocate without the use of limit valves and to control its speed in each direction. The two R-343 valves also incorporate adjustable delay features that will control the time between retract and extend cycles. With the miniature needle valves, the speed of the cylinder is also adjustable for your application.

Part No.	Description
VA-06	Auto-Cycling of a Double-Acting Cylinder

Bill of Materials in Assembly

Qty.	Part No.	Description
2	R-343	3-Way Modular Delay Valve
1	R-412	4-Way Modular Reset Valve
1	TV-3S	On-Off Toggle Valve
1	11675-05	Fitting Adapter
2	MNV-1KP	Miniature Needle Valve
2	15070	Noise Muffler
1	CM-06-PQ	Circuit Manifold
1	PQ-CC05N	5/32" Male Connector Push-Quick Fitting
4'	URT1-0503-YLT	5/32" O.D. Polyurethane Tubing, Yellow
10'	URT1-0805-GNT	1/4" O.D. Polyurethane Tubing, Green



All components are also available for individual purchase
The CM-06 subplate is available with 1/8" NPT and #10-32 threads



CLIPPARD QUALITY STAINLESS STEEL CYLINDERS

Pneumatic cylinders feature polished I.D 304 stainless steel tubes for low friction. Available in 12 bore sizes with strokes to 40". Precision-rolled construction, clear anodized machined aluminum heads, and rods ensure long life and performance.

- Roller-burnished rods
- Long lasting seals
- Long cycle life
- Made in the USA with pride
- Interchangeable design
- Replaceable rod seals
- 100% testing

Clippard—The Preferred Cylinder!

See Pages 1 through 93, or visit www.clippard.com/cylinders for our easy-to-use on-line configurator.